

THE
TOUCH OF
THE MASTER'S
HAND

Written & Directed by
GREGORY BARNES

PUBLICIST | FALCO INK.
SHANNON TRUESCH | Shannontreusch@falcoink.com
JANICE ROLAND | Janiceroland@falcoink.com

GENERAL DETAILS

WRITER/DIRECTOR | GREGORY BARNES
CONTACT | GREGORYWBARNES@GMAIL.COM
WWW.GREGORYBARNES.COM
708.280.0537

WEBSITE | WWW.MASTERSHANDFILM.COM

PUBLICISTS | FALCO INK.
SHANNON TRUESCH | Shannontreusch@falcoink.com
JANICE ROLAN | janiceroland@falcoink.com
(w) 212.445.7100 - (m) 917.225.7093

PRODUCTION COMPANY | THE AMERICAN STANDARD FILM CO.
WWW.THEASFC.COM
info@theAsfc.com

RUNTIME | 11:39
LANGUAGE | SPANISH
USA | 2021
ASPECT RATIO | 4:3
FORMAT | ARRI ALEXA PLUS

All production stills and copy available for download: <https://bit.ly/2JdOZvP>



LOGLINE

Troubled by an unnatural temptation, a young Mormon missionary must confess the humiliating depths of his pornography addiction.

SYNOPSIS

Elder Hyde is a young Mormon missionary in Mexico alienated by impure thoughts. He harbors a secret sin so embarrassing, he can only describe it euphemistically to his Heavenly Father during prayer. Determined to alleviate his guilty conscience during his worthiness interview, Hyde suffers through his mission conference and bizarre team-building exercises.

But when Hyde finally finds himself sitting across from the imposing mission president, his shame holds him back. Will we find out what causes such tribulation? And if Hyde does “come clean,” what guidance will the mission president provide to return him to the fold?

The Touch of the Master's Hand examines the basic urges that trouble the optimistic gleam of a Mormon Missionary's holy purpose.



THE
TOUCH_{OF}
THE MASTER'S
HAND



DIRECTOR'S STATEMENT

The Barnes family legend goes something like this:

In 1834, the Mormon prophet Joseph Smith taught my great-great-great-great-grandmother Polly Hyde his new American religion in upstate New York. At the close of his lesson, Polly rebuked him by exclaiming: "Joseph! If what you say is false, then hell is too good of a place for you." To which Joseph replied, "you're right. Hell would be too good of a place. But it is true, I know it to be." Polly was baptized and, a hundred and sixty four years later, so was I.

Growing up in the church, Mormonism felt like too good of a place for me. My whole life, the prophet of the church - Gordon B. Hinkley - warned us via satellite broadcast to avoid "pornography like it was a plague." Like the main character in my film, Elder Hyde, I was taught to believe the truth of such hellfire talk. I convinced myself that I was an addict - a plague-ridden sinner. Only confession to God's representative could rid myself of the shame. But, unlike Elder Hyde, my Dad was the Bishop so I never confessed.

I was raised in a community with rigid standards of masculinity and intense pressure to conform. I struggled with belief but wanted to belong, so I served my Mormon mission to Salta, Argentina at the age of 19. These experiences of religious paradox have informed my perspective as a storyteller, focusing on personal alienation and nuanced, intimate codes (both sexual and social) within our own troubled communities.



DIRECTOR'S BIO



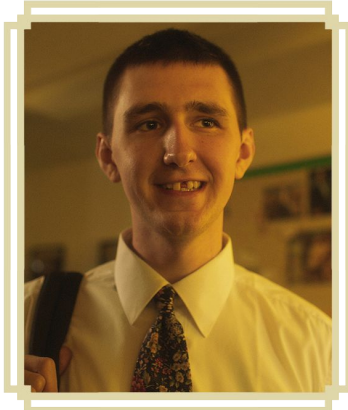
GREGORY BARNES | WRITER & DIRECTOR

Gregory Barnes is a queer filmmaker and artist based in New York City and Los Angeles. Raised a faithful Mormon in Oak Park IL, his films have been greatly influenced by the comedic absurdity of exiting that strange jello-obsessed-desert-religion. His most recent short, *The Touch of the Master's Hand* will premiere at the 2021 Sundance Film Festival. Prior, his work has been featured in NPR, Playboy, Pitchfork, and Z Ranch gallery in Marfa, TX. While no longer Mormon, Barnes served a mission in Argentina and graduated with a BA in media studies from Brigham Young University. He is currently an MFA candidate in film at NYU's Tisch School of the Arts.

Watch a "Meet The Filmmaker" here: <https://bit.ly/39xUL63>

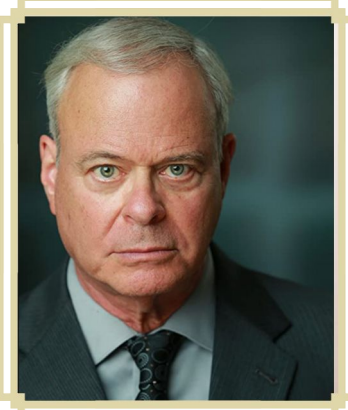


CAST BIOS



SAMUEL SYLVESTER | ELDER HYDE

Samuel is excited to make his cinematic debut in *The Touch of the Master's Hand*. He is a first time actor and looks forward to more roles in the future. An alumnus of Vassar College and the Università di Bologna, Samuel holds a BA in Cultural Studies and Italian Literature. He speaks fluent English and Italian. Currently, he works as a baker and pastry chef in upstate New York and is interested in food media. Samuel's culinary experimentation can be found on Instagram at [@silvestri.bake](#).



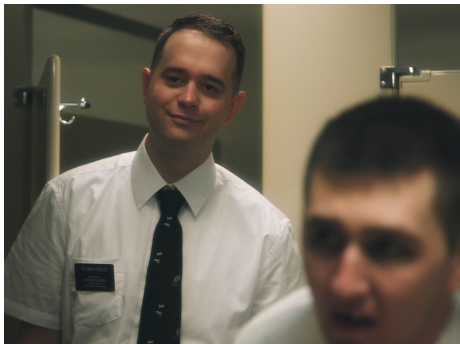
SAMUEL WHITEHILL | PRESIDENT PACKARD

Samuel Whitehill, SAG-AFTRA, has become known for edgy performances that embody the dark side of masculinity. He began acting in Austin, Texas but now lives in Burbank, CA, with his wife of 42 years and a rescue dog named Button. His latest feature film, "S'ids Lake," is streaming on Amazon.



THE
TOUCH OF
THE MASTER'S
HAND

PRODUCTION STILLS



All production stills and copy available for download: <https://bit.ly/2JdOZvP>

THE
TOUCH OF
THE MASTER'S
HAND



F.A.Q

What is a Mission?

All worthy Mormon men (usually between the ages of 18 and 19) are asked to dedicate two years of their life to spreading the gospel of Christ. Mormon missionaries are on the ground in 189 countries worldwide. A Mormon missionary has no say over where they're asked to serve.

What is a Mission President?

A Mission President is an older male patriarch appointed by the prophet to oversee the affairs of a given mission.

Where was this filmed?

In a real Mormon church that was built by Greg's great-grandfather in 1935.

If this film is semi autobiographical, did you actually pleasure yourself to an Avatar DVD on your Mission?

I don't kiss and tell. (No, but our friend did masturbate to wrestling trading cards.)

Can you still speak Spanish?

Un poco.



CREW

Director/Writer | Gregory Barnes
Producer | Joan Thompson
Producer/1st AD | Tyler Walker
Producer | Benjamin Buxton
UPM | Mahum Jamal
Cinematographer | Fidel Ruiz-Healy
Editor | Jordan Michael Blake
Production Designer | Hillia Aho
1st AC | Eve Liu
Gaffer | Derrick Woodyard
Key Grip/Electric Swing | Charlie Laud
Grip | Jason Cozier
Sound Mixer | Irene Mercedal
Boom Op | Chad Carr
Sound Designer | Tyler Walker
Colorist | Gabe Sanchez
Visual Effects | Nate Stebbing
Titles | Kyle Wayne Benson
ADR Recordist | Colin Hatch

CAST

(in Order of Appearance)

Elder Hyde | Sam Sylvester
The Speechifying Elder Vidal | Elijah Olachea
The Bathroom-Dwelling Elder Nibley | Chris Duce
The Kindly, Bespectacled Elder Hamblin | Drew Allen
The Shoe polishing Elder | John Klenk
President Packard | Samuel Whitehill
Additional Missionaries (Alphabetically)
Alhondra Andrad
Jacob Beaver
Vincent Doud
Chris Duce
Colin Hatch
Moises Nieves
Monika Ottehenning
Haeleigh Royall
Hanna Winzenried
Angelique Yvonne
The Converts (Alphabetically)
Pedro Chav
Valentin Cruz
Isaac Enriquez



The background of the image is a dark, atmospheric photograph of a church interior. Rows of dark wooden pews with green upholstered seats are visible, receding into the distance. In the upper left, a person wearing a white shirt is partially visible, standing and looking towards the right. The lighting is low, creating a sense of quiet and solemnity.

THE
TOUCH_{OF}
THE MASTER'S
HAND

END OF EPK

THE
TOUCH_{OF}
THE MASTER'S
HAND



All production stills available for download [here](#)

PRESS KIT | 13

CREW BIOS



JOAN LEE THOMPSON | PRODUCER

Joan Thompson is a creative producer based in New York and California. She is currently pursuing a dual degree MBA/MFA at NYU's Stern School of Business and NYU's Tisch School of the Arts Graduate Film program. Previously she was a producer at Bluecadet, a specialized digital agency and experience design firm. She is a graduate of Middlebury College and an alumna of Venture for America. Her work has been recognized by SXSW Interactive, the Webby Awards, Communication Arts, and as Vimeo Staff Picks.



FIDEL RUIZ-HEALY | CINEMATOGRAPHER

Fidel Ruiz-Healy is an award-winning Mexican-American cinematographer and director from San Antonio, Texas and an alumni from New York University's Tisch School of the Arts. His narrative and music video work has shown at such festivals as SXSW, Slamdance, Hamptons International, Fantasia, Palm Springs, and Mill Valley, along with being featured in the Tonight Show and publications ranging from NPR, Vice, Pitchfork, MTV, Filmmaker Magazine, NYLON, LA Weekly, along with numerous credits on Vimeo Staff Picks. His work can be seen at www.fidelruizhealy.com



THE
TOUCH_{OF}
THE MASTER'S
HAND

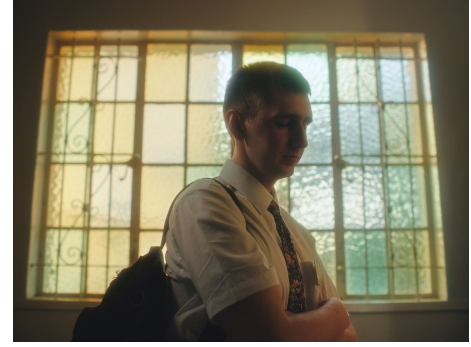


All production stills available for download [here](#)

PRESS KIT | 15

THE
TOUCH OF
THE MASTER'S
HAND

B.T.S STILLS



All B.T.S stills available for download [here](#)

PRESS KIT | 16

CONTACT

Director | Gregory Barnes

Email: gregorywbarnes@gmail.com

Producer | Joan Lee Thompson

Email: jlthomp124@gmail.com

Production Company | The American Standard Film Co.

Email: info@theasfc.com

www.TheAsfc.com



CAST

(in Order of Appearance)

Elder Hyde | Sam Sylvester

The Speechifying Elder Vidal | Elijah Olachea

The Bathroom-Dwelling Elder Nibley | Chris Duce

The Kindly, Bespectacled Elder Hamblin | Anonymous

The Shoepolishing Elder | John Klenk

Additional Missionaries (Alphabetically)

Alhondra Andrad

Jacob Beaver

Vincent Doud

Chris Duce

Colin Hatch

Moises Nieves

Moni O

Haeleigh Royall

Hanna Winzenrie

Angelique Yvonn

President Packard | Samuel Whitehill

The Converts

Isaac Enriquez

Pedro Chav

Valentin Cruz



THE
TOUCH_{OF}
THE MASTER'S
HAND



All production stills available for download [here](#)

PRESS KIT | 11

SYNOPSIS

Elder Hyde is a young mormon missionary alienated by impure thoughts. He harbors a secret sin so embarrassing he can only describe it euphemistically to his Heavenly Father during prayer. Determined to alleviate his guilty conscience during his monthly worthiness interview, Hyde maneuvers through the team-building exercises known as a missionary conference awaiting his confession.

But when Hyde finally finds himself sitting across from the imposing mission president, his shame holds him back. Will we find out what causes such tribulation? And if Hyde does “come clean,” what guidance will the mission president provide to return him to the fold?

Touch of the Master's Hand examines the basic urges that trouble the optimistic gleam of a Mormon Missionary's holy purpose.

